

**GROUND SOURCE HEAT DISTRIBUTORS,
GSHP AND REGULAR PUMP MANHOLES**

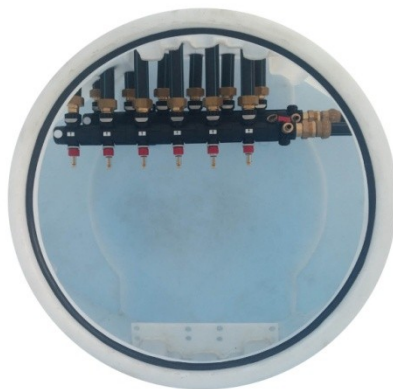


CONTENT

GEOHERMAL DISTRIBUTION – MOST SUITABLE DISTRIBUTION.....	1
LARGE GEOHERMAL MANHOLE KKS3.....	3
MEDIUM GEOHERMAL MANHOLE KKS2.....	5
SMALL GEOHERMAL MANHOLE KKS1.....	7
SMALL BORE MANHOLE.....	9
SMALL GEOHERMAL SHAFT	10
TAILOR MADE	13
INSTALLATION.....	14
OTHER PRODUCTS.....	17

GEOHERMAL DISTRIBUTION - MOST SUITABLE DISTRIBUTION

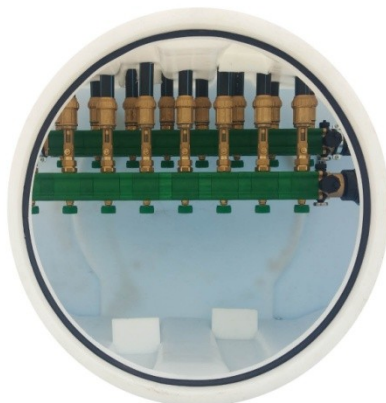
 **AFRISO**



Flow capacity 7-32 l/min



 **ONDA**
THERM SRL



Flow capacity 20-70 l/min



onninen



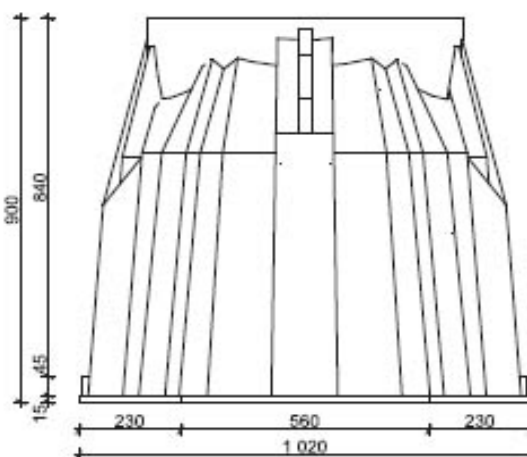
Flow capacity 20-70 l/min



Main pipe PE100 D40, D63, D90 or D110mm

Outflow PE100: D32 D40 mm.

LARGE GEOTHERMAL MANHOLE (KKS₃)



Distribution units and manholes can be manufactured by customer specification.

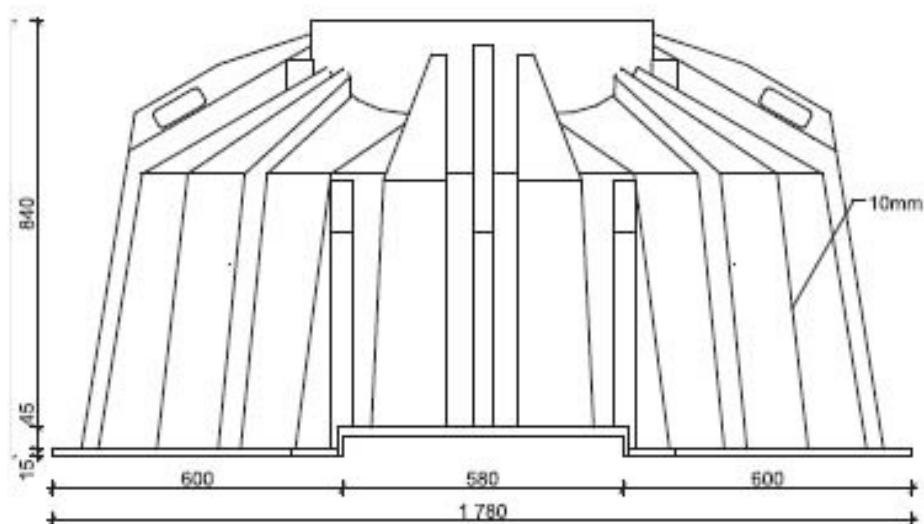
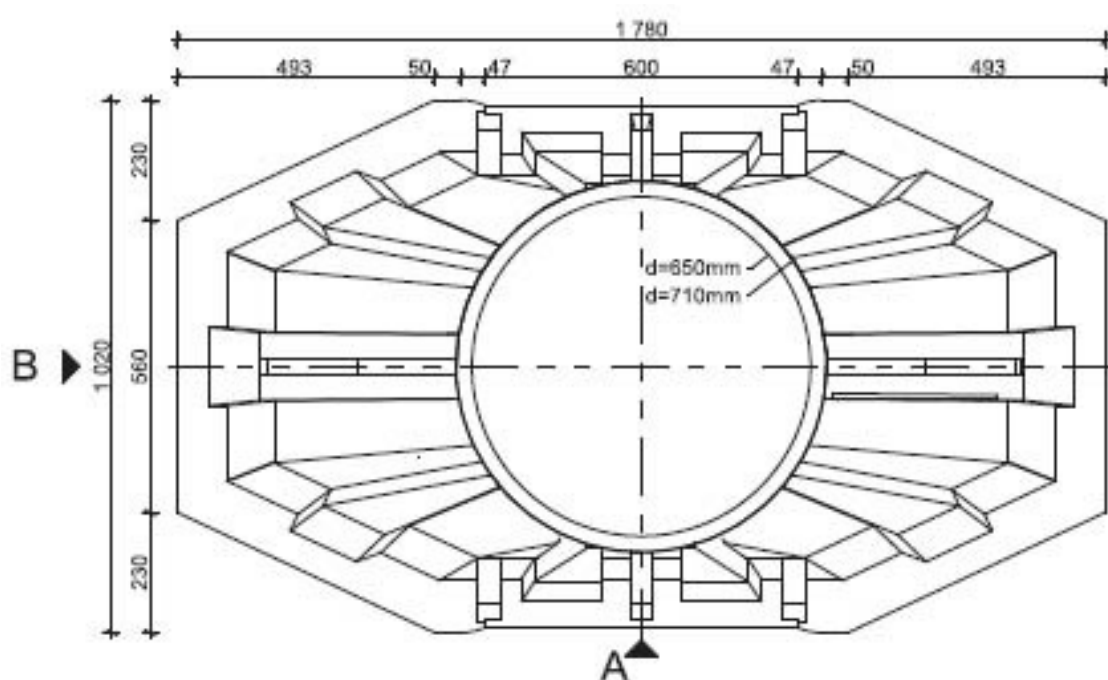
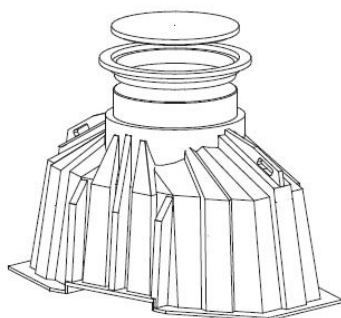
Inlet and outlet from pages 1 to 3.

Main pipe: D40, D63, D90 or 110 mm. Outlet: D32 or D40 mm.

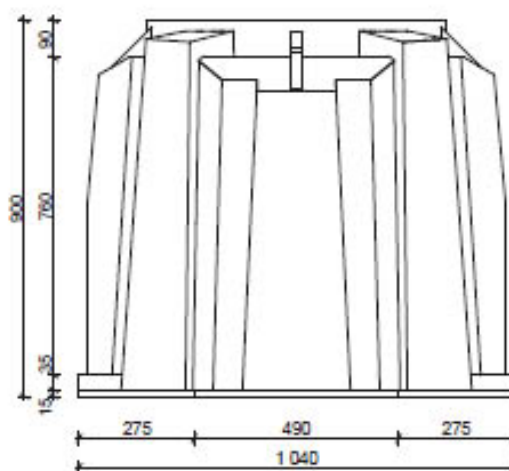
The manhole cover can be telescopic or fixed . Manhole is 100 % waterproof.

The manhole is intended for	6-12 - contours				
Load bearing capacity of the cover	200 kg	600 kg	15 kN (1,5t)	B125 (12,5t)	D400 (40t)
Material of the cover	PE			Cast iron	
Material of manhole and pipes	PE				
Telescopic height	300 mm				
Height	840 mm				
Width	1020 mm				
Length	1780 mm				
Manifold	D90				
End pipe of distribution unit	D40				
Sample manhole (load bearing capacity of the cover 200 kg)	For 6 contours	For 8 contours	For 10 contours	For 11 contours	For 12 contours
*Price	950 €	1139 €	1271 €	1387 €	1584 €

Prices do not include VAT.



MEDIUM-SIZE GSHP MANHOLE (KKS₂)



Distribution units and manholes can be manufactured by customer specification.

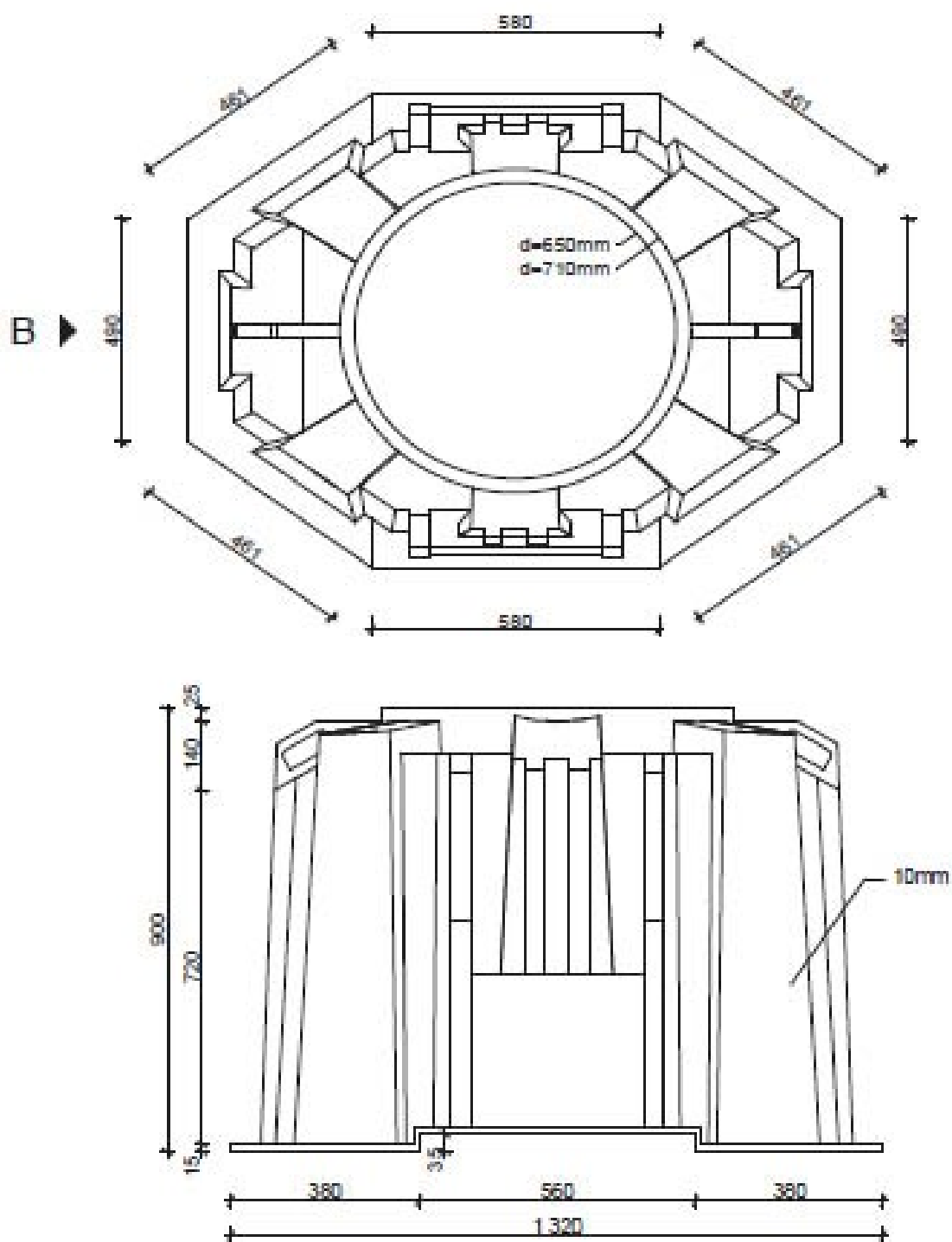
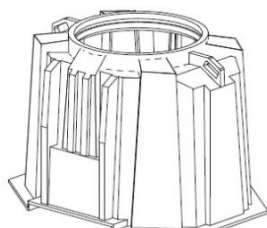
Inlet and outlet from pages 1 to 3.

Main pipe: D40, D63, D90 or 110 mm. Outlet: D32 or D40 mm.

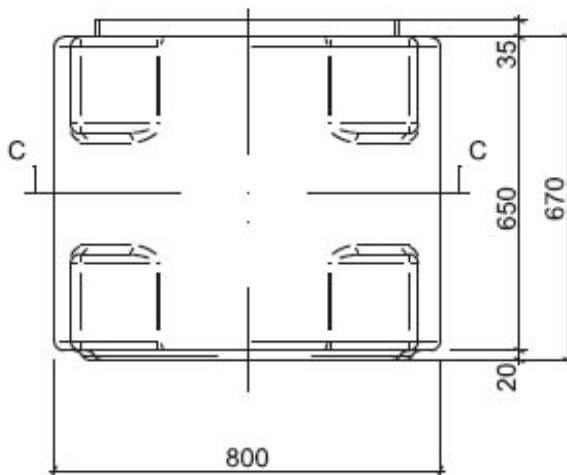
The manhole cover can be telescopic or fixed . Manhole is 100 % waterproof.

The manhole is intended for	3-8 - contours				
Load bearing capacity of the cover	200 kg	600 kg	15kN (1,5t)	B125 (12,5t)	D400 (40t)
Material of the cover	PE			Cast iron	
Material of manhole and pipes	PE				
Telescopic height	300 mm				
Height	900 mm				
Width	850 mm				
Length	1230 mm				
Manifold	D63				
End pipe of distribution unit	D40				
<i>Sample manhole (load bearing capacity of the cover 200 kg)</i>	<i>For 3 contours</i>	<i>For 4 contours</i>	<i>For 5 contours</i>	<i>For 6 contours</i>	<i>For 7 contours</i>
<i>*Price</i>	<i>623 €</i>	<i>739 €</i>	<i>795 €</i>	<i>841 €</i>	<i>894 €</i>

Prices do not include VAT.



SMALL GSHP MANHOLE (KKS₁)



Distribution units and manholes can be manufactured by customer specification.

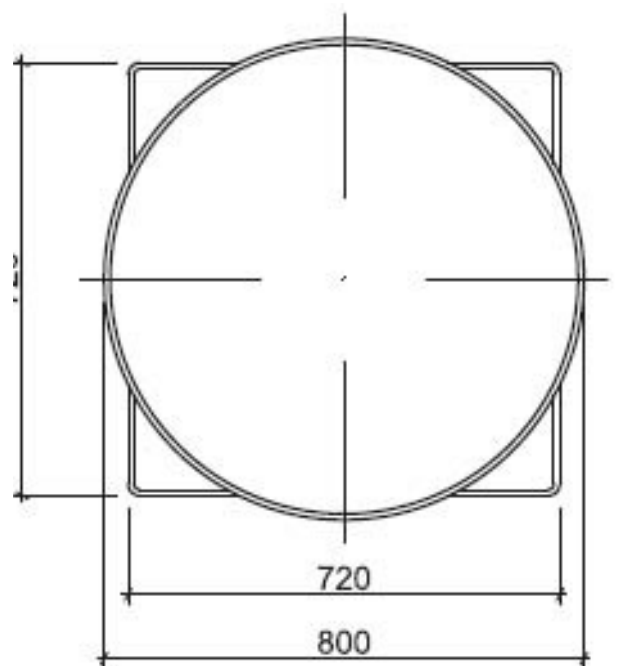
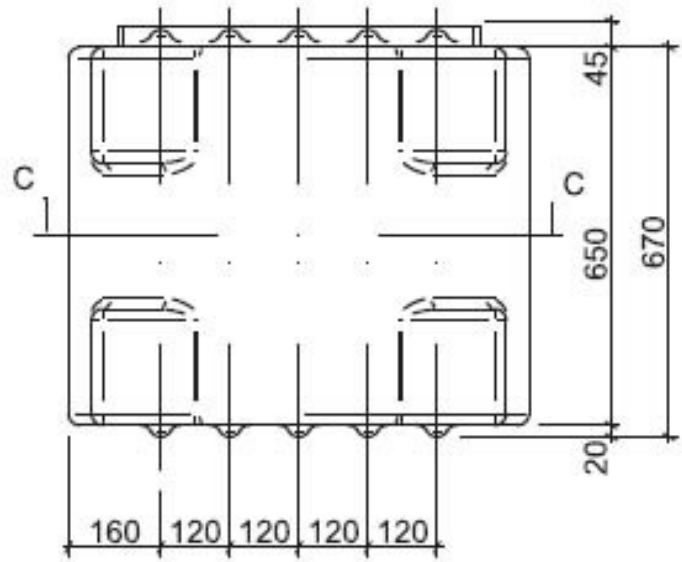
Inlet and outlet from pages 1 to 3.

Main pipe: D40, D63 or D90 mm. Outlet: D32 or D40 mm.

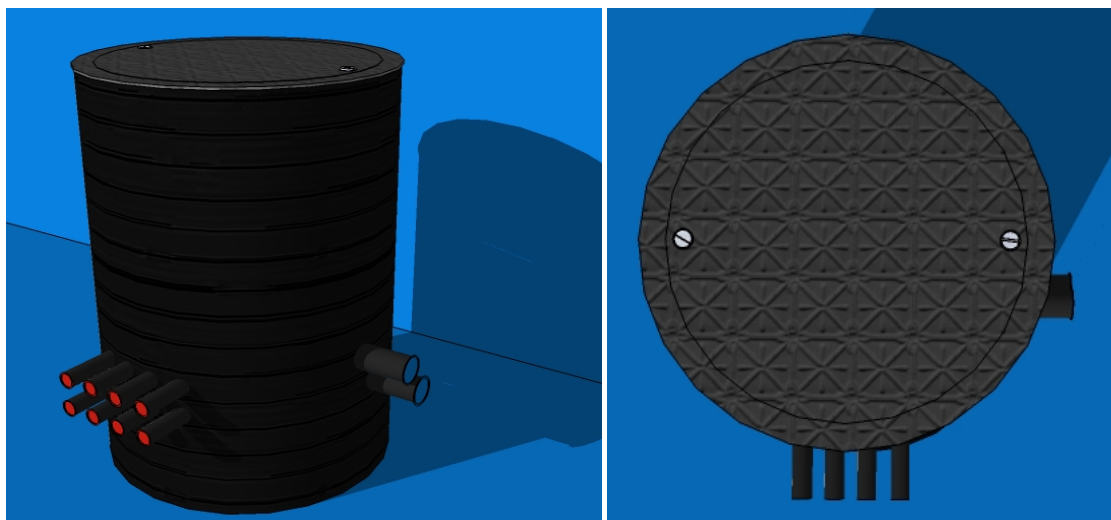
The manhole cover can be telescopic or fixed . Manhole is 100 % waterproof.

The manhole is intended for	3-6 -contours			
Load bearing capacity of the cover	200 kg	600 kg	15kN (1,5t)	B125 (12,5t)
Material of the cover	PE			Cast iron
Material of manhole and pipes	PE			
Telescopic height	300 mm			
Height	680 mm			
Width	800 mm			
Length	800 mm			
Manifold	D40			
End pipe of distribution unit	D32			
<i>Sample manhole (load bearing capacity of the cover 200 kg)</i>	<i>For 3 contours</i>	<i>For 43 contours</i>	<i>For 5 contours</i>	<i>For 6 contours</i>
<i>*Price</i>	<i>623€</i>	<i>739€</i>	<i>795€</i>	<i>841€</i>

Prices do not include VAT.



SMALL GSHP MANHOLE / BORE WELL PUMP MANHOLE (PIPE D700 MM) WITHOUT AND WITH BASE



Distribution units and manholes can be manufactured by customer specification.

Inlet and outlet from pages 1 to 3.

Main pipe: D40, D63 or D90 mm. Outlet: D32 or D40 mm.

The manhole cover can be telescopic or fixed . Manhole is 100 % waterproof.

The manhole is intended for	2-6 -contours			
Load bearing capacity of the cover	200 kg	600 kg	15kN (1,5t)	B125 (12,5t)
Material of the cover	PE			Cast iron
Material of manhole and pipes	PE			
Telescopic height	300 mm			
Height	680 mm			
Width	800 mm			
Length	800 mm			
Manifold	D40			
End pipe of distribution unit	D32			
<i>Sample manhole (load bearing capacity of the cover 200 kg)</i>	<i>Manhole without base</i>	<i>Manhole with base</i>	<i>For 3 contours</i>	<i>For 4 contours</i>
<i>*Price</i>	<i>150€</i>	<i>180€</i>	<i>623€</i>	<i>739€</i>

Prices do not include VAT.

SMALL GEOTHERMAL SHAFT (PIPE D₅₀₀ MM) FOR FLOOR OR GROUND



Manhole is manufactured as customer needs it.

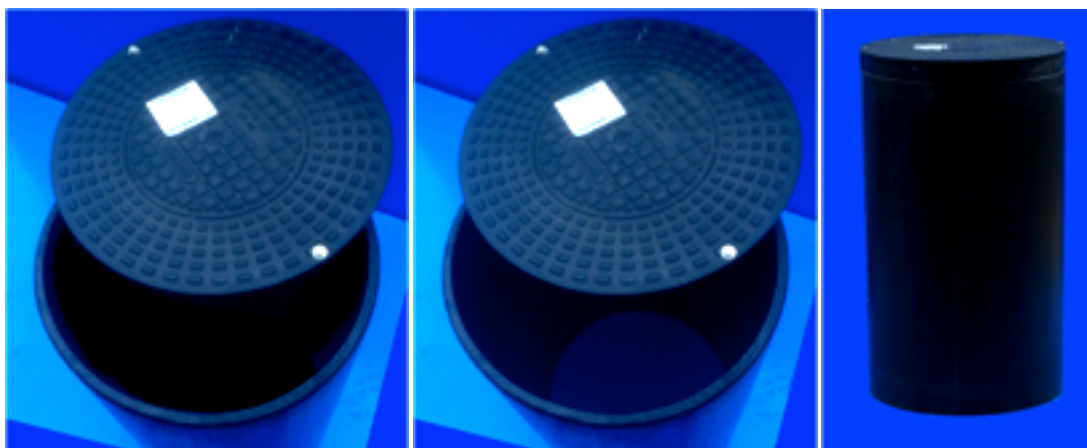
Main pipe: D40 or D63 mm.

Outlet: D32 or D40 mm.

The manhole is intended for	2-4 -contours		
Load bearing capacity of the cover	15 kN (1,5t)		
Material of the cover	PP		
Material of manhole and pipes	PE		
Height	850 mm		
Diameter	500 mm		
<i>Sample manhole (load bearing capacity of the cover 200 kg)</i>	<i>For 2 contours</i>	<i>For 3 contours</i>	<i>For 4 contours</i>
<i>*Price</i>	<i>480 €</i>	<i>590 €</i>	<i>663 €</i>

Prices do not include VAT.

SMALL GSHP MANHOLE / BORE WELL PUMP MANHOLE (D500 MM)WITHOUT AND WITH BASE.



Manhole can be with or without base

Distribution units and manholes are manufactured upon request of the client.

The manhole is intended for	Underground pump	
Load bearing capacity of the cover	15 kN (1,5t)	
Material of the cover	PP	
Material of manhole and pipes	PE	
Schacht höhe	850 mm	
Diameter	500 mm	
<i>Sample manhole (load bearing capacity of the cover 200 kg)</i>	<i>Manhole without a base, with lid.</i>	<i>Manhole with base and lid.</i>
<i>*Price</i>	<i>80</i>	<i>100</i>

Prices do not include VAT.

SMALL WELL WITHOUT BASE D500 MM.

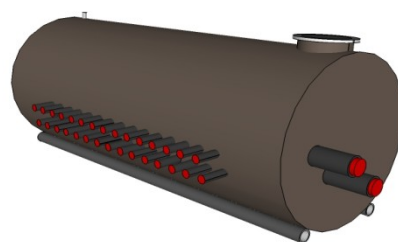
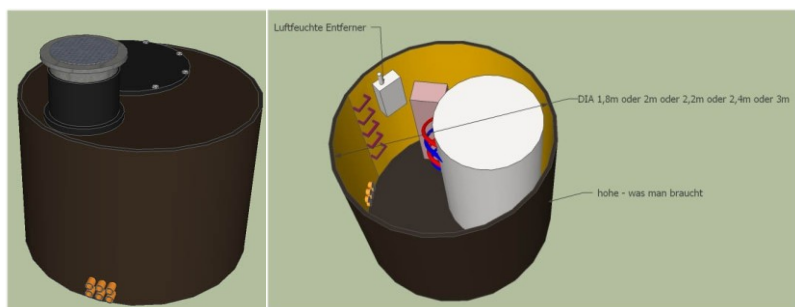


We offer that manhole only without base.

The manhole is intended for	Underground pump
Load bearing capacity of the cover	15 kN (1,5t)
Material of the cover	PP
Material of manhole and pipes	PP
Schacht höhe	850 mm
Diameter	500 mm
<i>Sample manhole (load bearing capacity of the cover 200 kg)</i>	D63
<i>*Price</i>	68 €

Prices do not include VAT.

MANHOLES MANUFACTURED UPON SPECIAL REQUEST

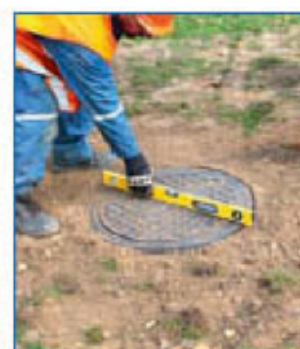
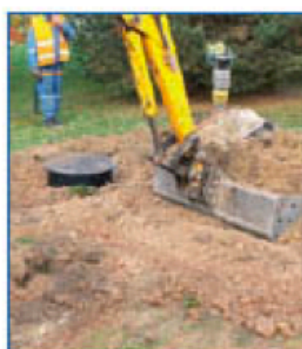
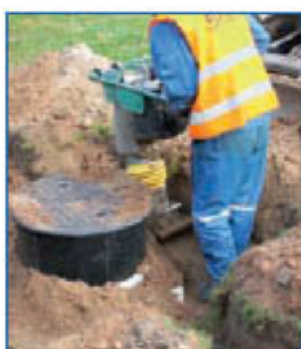
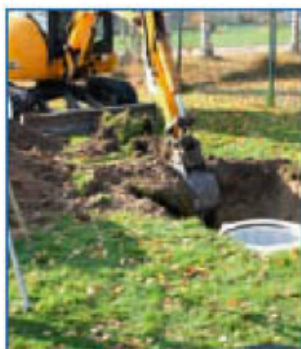
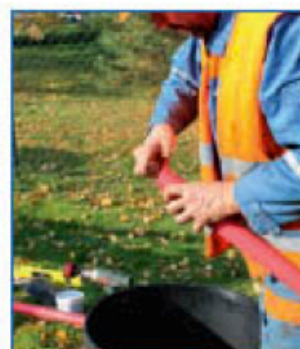
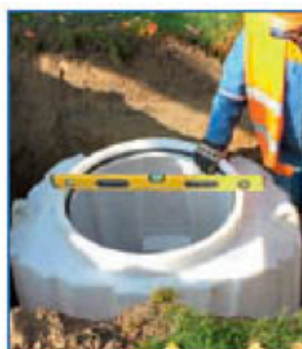
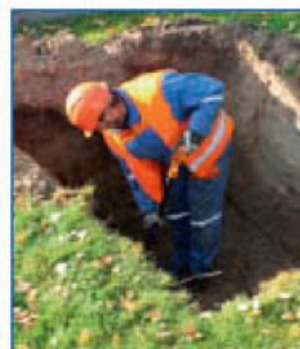
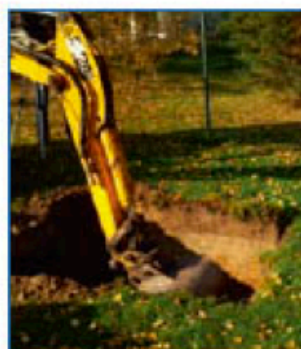


WE ALSO MANUFACTURE PLASTIC TANKS AND MANHOLES UPON SPECIAL REQUEST. DIAMETER OF A MANHOLE 0.3 – 2.6 METRES AND LENGTH UP TO 6 METRES.

THE MANHOLES WILL BE MANUFACTURED AS REQUESTED FOR GREEN AREAS AND/OR UNDER ROADS.

If you have questions or need more information, please do not hesitate to contact us at any time.

INSTALLATION OF MANHOLE



INSTALLATION OF MANHOLE

• PREPARATION OF THE PIT

- The pit has to be a minimum of 500 mm wider than the diameter of the manhole at any point.
- The bottom of the pit has to be covered with a 100 mm layer of compacted sand.
- **If the manhole is installed on a road with heavy vehicle traffic, at least a 500 mm telescope must be used. (The body of the manhole may otherwise deform!)**

• MANHOLE INSTALLATION

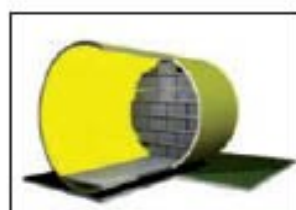
- Lift the manhole onto the compacted bottom of the pit while making sure that the manhole is on dry soil and remains horizontal.
 - Once the manhole is in position, compact the soil around the manhole in 300 mm layers maximum. Make sure that the soil does not contain sharp particles (stones) exceeding 30 mm. The whole body of the manhole must be surrounded by soft soil (sand) and the pit must be filled all the way up to the cast iron cover to avoid later deformation of the manhole. The minimum thickness of sand around the body of the manhole must be 100 mm. If the manhole is backfilled only half way, there is a danger that the wall of the manhole may deform if a heavy vehicle passes close by. It is essential that compacting is carried out with a vibrating plate and not with heavy weight equipment. Heavy weight equipment can only be used for asphaltting. **All preparatory compacting of crushed stone must be carried out with a vibrating plate only!**
 - The manhole does not require additional anchoring as its base plate is sufficiently wider than the manhole to stop it from rising up.
- ### • INSTALLATION OF TELESCOPIC CAST IRON COVER
- To install the telescopic cast iron cover, lubricate the seal attached to the manhole and push the telescope through the opening until the required height is reached. It is essential that a minimum of 50 mm and no more than 150 mm of the telescope tube is inserted through the seal.
 - The telescopic cast iron cover with the diameter of 630 mm has two fastening bolts.

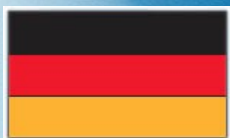


INSTALLATION OF MANHOLE

- **Asphalt can only be laid around D400 covers.** If you wish to lay asphalt around the covers in landscaped areas, the D400 covers must be installed for the time of asphalt works.
 - **BACKFILLING THE PIT**
 - To avoid deformation, we recommend to lift the telescopes to their maximum height when installing on site and to backfill soil over the top of the manhole.
 - **MANHOLE MAINTENANCE**
 - Due to the qualities of the material, the polyethylene cable manholes are maintenance free.
1. **Asphalt concrete cover 50mm**
 2. **Asphalt concrete foundation 60mm**
 3. **Two-layer crushed stone cover (150mm fr.5-20+150mm fr.20-40)**
 4. **Sand base 300mm**
 5. **Existing subsoil**

OTHER PRODUCTS





Tel: +498 00 723 4957
Mob: +372 5697 5777
Mob: +372 5686 4100
sales@vesimentor.ee



Tel: +372 568 73 773
info@vesimentor.ee

Vesimentor OÜ
80010 Pärnu
Mõrra 2b
Estonia
Reg nr. 10206582
Vat nr. EE100081893



Tel: +372 5687 4999
sales@vesimentor.ee



Tel: +48 22 49 43 444
sales@vesimentor.ee



Tel: + 372 5687 4999
sales@vesimentor.ee



European Union
Regional Development Fund



Investing in your future